

Diablo Diggin's
Bonnie Eichler, Editor

SAVE STAMPS for donation to Easter Seals

Contra Costa Mineral & Gem Society
(An educational non-profit organization)
PO BOX 4667
Walnut Creek, CA 94596

FIRST CLASS

Member of : American & California Federations of Mineralogical Societies.



1950-1951

1950-1951

1950-1951

1950-1951

1950-1951

This newsletter is dedicated in honor and in memory of the five Northern Illinois University students who were killed during their Geology class on Feb. 14, 2008.

Daniel Parmenter, age 20, Westchester, Ill.

Catalina Garcia, age 20, Cicero, Ill.

Ryanne Mace, age 19, Carpentersville, Ill.

Julianna Gehant, age 32, Mendota, Ill.

Gayle Dubowski, age 20, Carol Stream, Ill.

Next General Meeting of the CCM&GS is: Monday, March 10th, 2008.

**Meeting is at 7:30 PM.
Please mark your calendars.**



Refreshments

This is a list of members who we request to please bring refreshments to share at the March General Meeting:

Glenn Hubbard
Jim & Teresa Hurd
Mary Jernigan & Mike Thompson
Peggy Kardinal
Alan & Joanne Kilpatrick
Mary Ann King
Dave & Kim Kleesattel
Connie Klein
Vivian Kuhl

CCM&GS March Board is at 7 PM March 2nd at Pres. Hicks' home in Antioch.

There was no Board of Directors Meeting held in February.

President's Message

The February Meeting program by **Barrie Bieler** was great. We had a nice turn out and the Madrone Room at Centre Concord was very comfortable. The March meeting will be in the Madrone Room.

I am looking forward to the Antioch Show and the Castro Valley Show. Member **Brownie Cameron** will be demonstrating slate carving at the Castro Valley Show and I will be joining my mother, Member **Ophelia Hicks**, in demonstrating gem trees there too.

Social Chair Naomi Morgan is planning a Club Tailgate and BBQ at the Morgan Ranch on Flag Day, June 14th. This is the Saturday before Father's Day. Mark your calendars now. This event provides an opportunity to enjoy a day in the country while acquiring rocks and rock related items-or-sharing items from your collection that you can spare. Come socialize with other rockhounds and enjoy a club provided BBQ lunch.

Attending or leading classes is an important activity for members of the club. I want to report that I met with Member **Vivian Kuhl** to teach her how to construct a Chinese Double-X Knot satin cord necklace. We put beautiful tiger-eye pendants on a rich gold colored satin cord. If you can teach a class, contact **Rana Miller Owen** to discuss and work out the details. If you need a location, contact me about setting up the class at my home.

Thank you to the members who have decided to go paperless for their monthly newsletter. **Editor Bonnie Eichler** championed this effort, thank you Bonnie. Currently, there are 21 newsletters that are being e-mailed to members. We did have one member report trouble in opening the newsletter file, but everyone else seemed to have received it ok.

There are always bumps when starting something new. Contact me if you want to go paperless. Here is my contact: maryhicks@comcast.net

Mary Hicks, President

WANTED: A Librarian. The CCM&GS needs a member to take care of the club's library, support members checking out and returning books and tapes, purchasing replacement or new books, promoting the use of the Library in the monthly newsletter. Call me if you have question or can support this club position. To volunteer contact Mary Hicks at maryhicks@comcast.net or 779-0698.

February 11th General Meeting

The meeting was called to order by President **Mary Hicks** at 7:35 pm. The pledge of allegiance was lead by **Dick Pankey**. Mary welcomed everybody to the meeting at our new day and location (2nd Monday of the month at the Centre Concord). Mary let everybody know that we need to vacate the building by approximately 9:45 pm. There was no Board of Directors' meeting in February, so some club business needs to take place tonight.

Sherb Brown, our Sergeant-of-Arms collected 25¢ from each club member not wearing their name badge.

Mary reminded the club members that the monthly Board of Directors meeting is open to the general membership and everybody is welcome to attend. Please read the newsletter for the time and location of the Board meeting, or call a Board member if you are interested.

Mary would like some volunteers to put together a club show case for the 2008 CFMS show in Ventura. Please see Mary if you are interested in helping.

Hospitality Chair, **Naomi Morgan** pulled the door prize raffle tickets. We had 7 guests visiting with us this month. **Kathy Stark** won the door prize. **Marlow Hicks** and **Glenn Hubbard** were in the hospital this month.

Joe Yarbrough is filling in for **Terry Caskey** as Display Chair this month. Items of interest were brought in by **Dick Pankey**, **Alan Kilpatrick**, and **Shannon Merrill**. Please see the newsletter for details. There were cabs and faceted gems to view and vote on.

Dennis Freiburger, 2nd Vice President and Field Trip Chairman discussed upcoming field trips and shows (please see the newsletter for details). Dennis also gave a brief summary of his recent trip to Ethiopia. Help is need with refreshments and the potluck for the upcoming North Bay Field Trip Meeting. The CCM&GS is hosting this meeting and we need some help. Please contact **Dick Pankey**.

Rana Owen, Education Chair, is getting this year's classes organized. For February (16), **Mary Hicks** will teach the Chinese double-X knot jewelry. The next "Bead-In" will be on Feb. 29 at Joanne Caskey's house. Read the newsletter for more details.

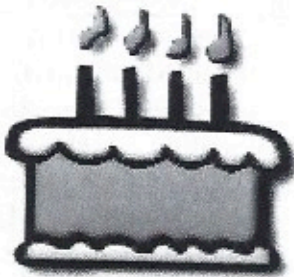
Dick Pankey – Federation Director reminded us that he and Betty are organizing the display cases for the upcoming CFMS meeting and are looking for people to put together display cases. Also, Dick reminds us that the CFMS and AFMS newsletters contain a lot of good information and articles. You can read those newsletters on the CFMS and AFMS websites.

Harry Nichandros introduced our guest speaker, our very own **Barrie Bieler**.

Tonight's talk will be on the geological process of **Mass Wasting**, which is the erosion and transport of geological material primarily by gravity. Over the years, Barrie has been taking wonderful photographs that show various geological principles in clear detail. Tonight's slide show showed a wide range of Mass Wasting processes over a wide range of climates and conditions.

The meeting was adjourned at about 9:00 pm for refreshments and socializing.

David Kleesattel, Secretary



March Birthdays

Sharon Neuhauser	3/2
Sherry Luebke	3/6
George (Matt) Matthews	3/14
Betty Mackenzie	3/14
Susan Dennis	3/25
Karen Rice	3/30
Bonnie Eichler	3/31



March Anniversaries

Charles & Pat Bon	3/2
Joanne & Terry Caskey	3/17

Membership Report

Thank you everybody for renewing your membership. If you have not received your 2008 membership card, please see me at the next meeting. The new club roster will be mailed to you very soon (if not already).

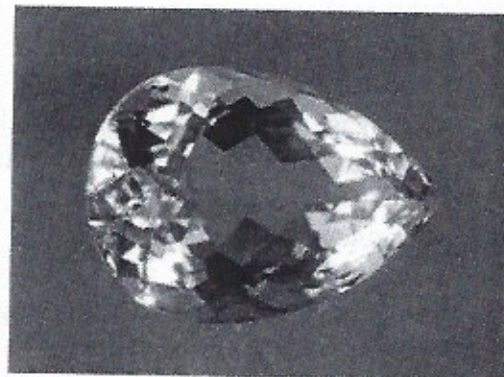
The Board of Directors will be reviewing and voting on the following membership applications at our March 2 Board meeting:

Mary Selmi
Paul & Jolene Olkin
Rosalie Bayliss
Donna Albrecht
Christine McKay.

I still have plenty of the new Contra Costa Mineral & Gem Society patches and pins. I will have those available for purchase at the monthly meetings. Please see me if you are interested in patches and pins. Plus we still have lots of "Rockhound" decals too.

Kim Kleesattel, Membership Chair

This Month's Birthstone – AQUAMARINE



This information was derived from the following internet sources:

"Beads & Baubles Café", "Healing Properties of Gemstones", "Wikipedia"

Birthstone of Pisces (Fish): Feb. 19 - March, and anniversary gemstone for the 16th and 19th years of marriage. Aquamarine is the official state gem of Colorado.

AQUAMARINE (Lat. aqua marinā, "water of the sea") is a gemstone-quality transparent variety of beryl, having a delicate blue or turquoise color, suggestive of the tint of seawater. It's closely related to the gem emerald. Colors vary and yellow beryl (heliodor), rose pink beryl (morganite), and white beryl (goshenite) are known.

Caution:

- If exposed to sunlight this gemstone can fade, so you should not leave it or wear it out where it is exposed to sunlight for an extended period of time.
- Some unscrupulous jewelers have been known to sell blue topaz as aquamarines, since blue topaz is much cheaper.

Gem lore:

- a symbol of beauty, honesty, and loyalty and is said to attract love and affection to the wearer.
- works against nerve pain, glandular problems, toothache, and disorders of the neck, jaw and throat.
- strengthens liver and kidneys.
- diminishes problems with eyes, ears and stomach, and relieves coughing.
- protects from seasickness, and is said to help ease depression and grief.
- preserves innocence, quickens intellect, and increases self-knowledge.

- reputed to promote clear and logical thinking and for that reason is often carried as a 'good luck' charm by those who are taking examinations or being interviewed for a job.

Mystical power: Aquamarine has a soothing effect on "just married" couples, assisting them in working out their differences and insuring a long and happy marriage. It is said to re-awaken love in long-married couples and signify the making of new friends. It also provides courage and strengthens the will. It is an excellent stone for meditation.

Where can you find this gemstone?

Aquamarine is found in Brazil, India, Sri Lanka, Russia (Ural Mountains) and USA (Maine, New Hampshire, Connecticut, North Carolina, Colorado and Vermont). Aquamarines are mined in a number of exotic places including Nigeria, Madagascar, Zambia, Pakistan and Mozambique. Brazil is the source of the finest aquamarines.

Properties:

Crystal system: hexagonal

Cleavage: very difficult in one direction, almost never seen

Fracture: conchoidal

Mohs Scale hardness: 7.5 – 8

Luster: vitreous to resinous

Polish luster: v vitreous

Submitted by J Caskey

AQUAMARINE TRIVIA BIT

(The following information is taken from International Colored Gemstone Association on the Internet)

Aquamarine is one of our most popular and best-known gemstones, and distinguishes itself by many good qualities. It is almost as popular as the classics: ruby, sapphire and emerald. In fact it is related to the emerald, both belonging to the beryl family.

The colour of aquamarine, however, is usually more even than that of the emerald. Much more often than its famous green cousin, aquamarine is almost entirely free of inclusions.

Submitted by M. Jernigan

Future Meeting Program Calendar

Due to the change in meeting date, programs may be canceled and must be considered tentative.

March's Program: To Be Announced

Harry Nichandros – VP, Programs

Field Trip Calendar

March 8. Morgan Hill, CA. To collect Poppy Jasper. Hosted by Santa Cruz and Santa Clara Valley Gem & Mineral Societies.

March 15. Pittsburg, CA. North Bay Field Trips spring meeting. Community Presbyterian Church, 200 East Leland Road.

April 5. Lovelock, NV. To collect fossils and petrified wood. Hosted by Fossils for Fun Society.

April 12. Pittsburg, CA. Seminar for field trip leaders and attendees. "Checking land status, practical GPS, and personal responsibility." Community Presbyterian Church, 200 East Leland Road.

April 19 (Rain date May 17). Stonyford, CA. To collect solid orbicular jasper. Hosted by Sutter Buttes Gem & Mineral Society.

April 26. Pulga, CA (North of Oroville). To collect Idocrase (Pulga Jade). Hosted by Paradise Gem & Mineral Society.

For more information about these trips contact Dennis Freiburger.

Various Shows & Events

February 29 – March 2. Hayward, CA. Mineral & Gem Society of Castro Valley Show. Centennial Hall, 22292 Foothill Boulevard.

March 1, 2. Arcadia, CA. Monrovia Rockhounds Show. Los Angeles Arboretum, Ayers Hall, 301 N. Baldwin Avenue.

March 1, 2. Ventura, CA. Ventura Gem & Mineral Society Show. Seaside Park, Ventura County Fairgrounds, 10 W. Harbor Boulevard.

March 8, 9. Spreckels, CA. (Near Salinas) Salinas Valley Rock & Gem Club Show. Spreckels Veterans Hall, 5th Street and Llano Street.

March 8, 9. Turlock, CA. Mother Lode Mineral Society Show. Stanislaus County Fair Grounds, 900 N. Broadway.

March 14 – 16. (Stoddard Wells) Victorville, CA. Victor Valley Gem & Mineral Club Show. Stoddard Wells Road, Stoddard Wells.

March 15. Pittsburg, CA. North Bay Field Trips spring meeting. Community Presbyterian Church, 200 East Leland Road.

March 15, 16. Vallejo, CA. Vallejo Gem & Mineral Society Show. County Building, Solano County Fairground, 900 Fairgrounds Drive.

March 22, 23. Angles Camp, CA. Calaveras Gem & Mineral Society Show. Calaveras Fairgrounds.

March 22, 23. Roseville, CA. Roseville Rock Rollers Show. Placer County Fairgrounds, 800 All America City Boulevard. (Off Washington Avenue).

April 4 – 6. Bakersfield, CA. San Joaquin Valley Lapidary Society Show. Kern County Fair Grounds Carnival lot, 1142 South P. Street.

April 12. Pittsburg, CA. Seminar for field trip leaders and attendees. "Checking land status, practical GPS, and personal responsibility." Community Presbyterian Church, 200 East Leland Road.

April 26, 27. Santa Cruz, CA. Santa Cruz Gem & Mineral Society Show. Santa Cruz Civic Auditorium, Center and Church Street.

More listings at Rock and Gem Magazine website: www.rockngem.com/showdates

Dennis Freiburger, Field Trip Chairman **Field Trip Chairman Report**

Don't forget the April 12 **Seminar for Field Trip Leaders and Attendees** in Pittsburg sponsored by the California Federation of Mineralogical Societies. Various interesting and useful topics will be discussed, as well as giving all of us a chance to network with the

people who are genuinely active in field collecting. One of the presenters will be yours truly, demonstrating how to use GPS in a practical, inexpensive, and low technology manner. This event has been publicized previously in our Newsletter and I am happy to send you more details if you contact me.

Patty Wintroath and I have returned after almost the entire month of January in **Ethiopia**. The first portion of the trip was a guided, customized, 4 wheel drive itinerary to some of the less traveled areas of the country. The Valley of Miracles looked a lot like the Joshua Tree area of Southern California. The Ethiopian version added lots of camels and night caravans smuggling goods from nearby Somalia.

The last 2 weeks was an arranged tour with a dozen travelers from England and Ireland. This tour included the Rift Valley and Northern Highlands with an emphasis on geology, religion, and archeology. As some of you know, the Rift Valley is one of the most spectacular examples of a continental tectonic plate ripping itself in half. The Northern Highlands is a spectacular example of massive basalt flows thousands of feet thick. In my opinion it rivals the Scab Lands covering regions of Oregon, Idaho, and Washington. Near the border with Eritrea I experienced the locality where Lucy was found. We all know Lucy – one of our very long ago ancestors. The Ethiopians have certainly been industrious the last few thousand years. In Lalibela they managed to hand carve entire large churches out of contiguous red tufa. The churches are only attached to the matrix at the floor and some have 3 successive structures within each other. (A church in a church in a church.)

Ethiopia does not have a lot of collectable minerals or gemstones, but there's gold. Like most developing countries, they like a higher

purity content in the jewelry. Patty had a fun time shopping for 18 carat gold jewelry. The artistry and craftsmanship is free. All jewelry pieces in all shops are sold exclusively by carat weight.

Dennis Freiburger, Field Trip Chairman

Display Report

We had 4 competitions and 4 Winners !!!!

Novice: 2 Entries

#2 Jasper - Mary Hicks

#3 Seraphinite - Gary Casillas (Winner!)

Pro: 2 Entries

B Moss Agate (Western Australia)
- Barrie Bieler

C Banded Amethyst Agate
- Joe Yarbrough (Winner!)

Faceted: 2 entries

I Amethyst - John Rosploch - (Winner!)

II Glass with Bubble - Barrie Bieler

Shape of the Month: 4 Entries

A Graveyard Point Agate - Joe Yarbrough

B "Peanut Rock" (Agate from Western Australia) - Barrie Bieler (Winner!)

C Black Rock Agate - Mary Bufton

D Rhodocrosite - Mary Hick

March Shape of the Month is an OVAL

The following persons displayed items of interest:

Alan Kilpatrick - Ammalite from Canada (a converted ?) ammonite!!

Shannon Merrill - Idaho rough Opal and finished necklace

Vivian Kuhl - Jasper mounted on copper

Dick and Betty Pankey - Wiley Well items including Pastalite, Petrified iron wood, Chalcedony, Various nodules and a large geode from the Cinnamon beds.

Joe Yarbrough, for Display Chair Terry Caskey

2008 Shape of the Month

January	Any shape
February	Heart shape
March	Oval
April	Round
May	Pear (Teardrop)
June	Triangle (Three acute angles)
July	Freeform (No symmetry)
August	Rectangle (Or square)
September	Marquis (Cat eye)
October	No competition (Auction night)
November	Any shape
December	No competition (Christmas party)

In addition to the competition, please bring any rock or jewel related items, including photos, to share with every one.

Terry Caskey - Display Chair

Gary Cocialo's Estate Sale **- A Rockhound's Paradise**

Find it all here: large and small rough, slabs, fossils and more. There is loads of stuff from **Gary Cocialo's** rockhounding trips over many years. **The sale is on March 29 & 30, 10 am to 4 pm, no early birds.** The sale is at **3057 Enea Way, Antioch.** Exit Hwy 4 at Contra Loma Blvd., left on Putnam, right on Greenhall or Enea. Handbill will be at the next General meeting.

North Bay Field Trips NBFT Spring Meeting Saturday, March 15, 2008

Location: **Community Presbyterian Church**

200 East Leland Road
Pittsburg, CA

Hosted by the Contra Costa Mineral and Gem Society

The Contra Costa M&GS will host the North Bay Field Trips Spring Meeting on Saturday, March 15th. Registration, with coffee and doughnuts begins at 8:30 AM and the meeting starts at 9:30. The spring meeting is very important. We have had many fine field trips this past year through the combined efforts and cooperation of NBFT and COOP. This business meeting is where we plan and announce future trips and events, report on past trips, hold a silent auction, and generally have a great time meeting and talking with other rockhounds. All club members who are interested in field trips and rockhounding are invited and encouraged to attend. See the announcement flier for details and directions.

All club members who are interested in field trips are encouraged to attend NBFT meetings and to join in the fun and be active in NBFT events. We have interesting meetings with fine programs that should appeal to all members. This year's speaker is Bob Kanasaki, Naturalist at Black Diamond Mines Regional Park. It is a great place to socialize with other rockhound friends, enjoy a fine potluck lunch and best of all hear about field trips to come and reports on field trips just taken. At each meeting we have a great silent auction of rocks, minerals, specimens, slab, petrified wood, and much, much more!!

Since our club is hosting this meeting we will need help from our members to set up for the

meeting, and take down and clean up after the meeting. We will also need help in the kitchen with the coffee and donuts and with the potluck lunch. If you can help please arrive at 8:00 AM for set up. The more help we have the easier and faster it goes. Please give me a call or an e-mail to let me know that you will be there to help.

Richard Pankey, Inter - Regional Field Trips

Snyder's POW WOW May 2, 3 & 4, 2008



Now is the time for North Bay Field Trips club members to start thinking about and planning for **Snyder's Pow Wow**. The POW WOW at the Snyder's ranch near Valley Springs is coming up again on May 2 - 4. Betty and I will be up there Wednesday to set up camp. This is a great rockhound weekend. Beside the many rock mineral, gem, jewelry craft and food dealers, there is a lot to see and do: field trips, potlucks, happy hours, music and entertainment, Ye Old Timer's auction and more. There are Native American dancers, mountain men camp, and the Chugger field (Antique steam and gas engines). All set up on a working cattle ranch. It would be great to have a big NBFT turn out for this fun weekend. This is a great opportunity to get together for a fun

rockhound weekend. Hopefully many of you can make it, at least for a day trip. In the past there was always a big turnout for the Pow Wow. But we have had fewer and fewer campers the last few years. There is plenty of room so plan now to join us for the weekend. The Snyder's ranch is an easy drive for a one-day outing, but it is a lot more fun to go for the whole weekend.

As we did last year we will be camping with the Ye Old Timers Mineral Club. All club members are invited and encouraged to camp with NBFT/YOTMC. This is "dry camping" in the pasture immediately adjacent to the southeast corner of the Dealer area. Camping is \$10/night but by camping with NBFT/YOTMC it will only be \$8/night. Stop at the registration tent and tell them you are camping with NBFT/YOTMC, and then follow the signs back to our camping area. We will sign you in and collect your money. Reservations aren't required, but helpful in planning how much space we will need. If you are planning to camp at the Pow Wow please let me know: dickpankey@juno.com or 925-439-7509.

We will have two potluck dinners during the weekend. The Ye Old Timers will hold their annual potluck dinner at 6:00 and auction at 7:00 on Friday evening. This is their second moneymaker of the year. Donations are not expected, but are appreciated. The NBFT potluck dinner will be on Saturday evening at 6:00 PM. People that come out for the day only are invited to stop by the YOTMC/NBFT encampment to relax, visit and sit a "spell."

For the past several years NBFT and YOTMC members have helped direct traffic around the Registration Tent. This is a fun and easy way for NBFT and YOTMC to earn \$150 with just a little effort. Unfortunately, we have had a hard time getting volunteers and it ends up falling on the shoulders of only a few. One of

the reasons for the discount camping fee is because we help out. We will direct traffic on Friday, Saturday and Sunday from 8:30 to 3:30 and need at least 2 people per 1-hour shift. Anyone who wants to help should call me or see me at the POW WOW.

Please announce to all of your club members and encourage them to join us at the **Snyder's Pow Wow**. So come on and join in this great Rockhound event. Come to **Snyder's POW WOW**.

Dick and Betty Pankey, Wagonmasters

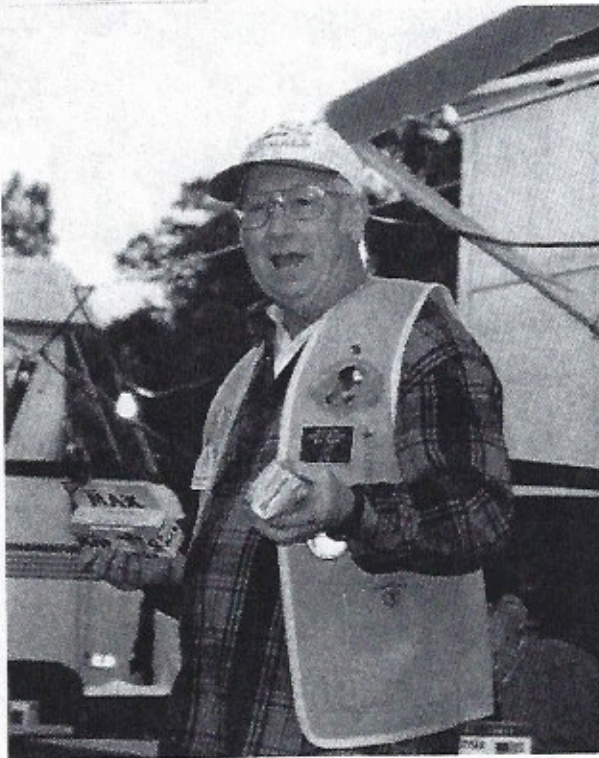


Ken Whitlatch, directing traffic at Snyder's Pow Wow, 2007.

SAFETY TIP

On the back of all of your credit cards, using indelible ink, (Sharpie) write "Ask for Photo ID". Make a photocopy of your credit card(s), front and back, proving you had marked it "Ask for photo ID" Then if you card is stolen or used without your permission, and the store does not ask for I.D. they are responsible for the charges and you are not - *and* now you have the proof that you had that clause written on your card.

Submitted by Ken Whitlatch



Dick Pankey – Auctioneer, Ye Old Timer's Auction, 2007.

Field Trip Report

Wiley Well District

We had a much smaller turnout for this year's trip to the Wiley Well District. We only had a total of 20 people join us over the 5 days of collecting trips. This is the smallest group of the 8 outings that I have led to this area. But we still had fun and enjoyed some pretty good collecting

Betty and I were the first to arrive at our camp on Saturday evening just before dusk. We got our trailer set up, had dinner and enjoyed the peace and solitude of the desert evening. It started raining sometime after midnight and by morning we had a 2 inch deep stream flowing under our trailer. We had camped in this spot 7 other times and hadn't realized that this was the drainage for the whole camp area. But then again we had never had so much rain before. The rain stopped and the sun came out early Sunday afternoon and the stream dried up. And the field trippers started to arrive. The rest of the week was sunny and dry with occasional windy periods. Great weather for our trip.

We had 5 days of collecting trips, a regular potluck and a soup potluck, afternoon happy hours, and a few campfires when it wasn't windy. One evening I made a peach cobbler in my Dutch oven for dessert around the campfire.

On Monday, Tuesday and Wednesday we focused on geodes and collected at the Hauser Beds, Potato Patch, Straw Beds, Cinnamon Beds and the Black Agate Beds. We did okay at most sites but the best collecting was at the Cinnamon Beds. Two different people each got a 10 inch plus geode and several smaller ones, and I found a couple of large broken geode halves in the tailings pile. Thursday we drove about 30 mile over to Arizona to collect petrified "ironwood" in the Crazy Woman

Wash. We found some petrified wood and saw a small herd of burros. They are noisy critters and let you know where they are. Some of our group left on Friday and the rest of us went exploring to some new areas south and west of the Roads End area. We used Delmer Ross's book on "Exploring the Wiley Well District using GPS". His book is about the history of the area, and gives a very detailed explanation of and GPS directions to the various geode beds and collecting areas. We spent the day exploring several float collecting areas. Nothing fantastic, but it was new to us and a lot of fun.

Will we do the Wiley Well District trip again in January 2010? Maybe; we will wait and see.

By Dick Pankey



Leukemia and Lymphoma Society Fund Raiser

Nancy Whitlatch has once again partnered with Team in Training and is raising money for cancer research and prevention for the

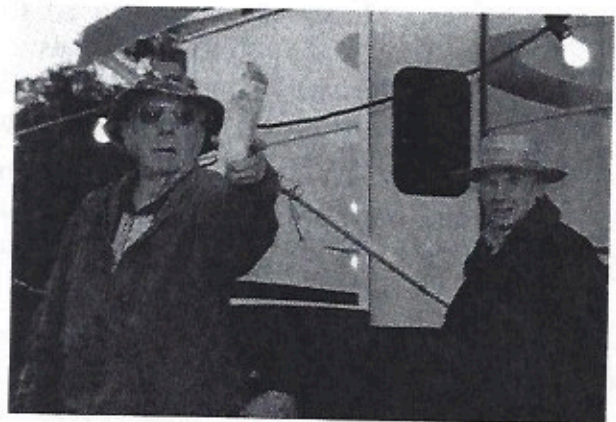
Leukemia and Lymphoma Society. She will be participating in this year's Markleeville Death Ride. It is a 129 mile bike ride, grinding up 15,000 feet of mountain side. Hence the name, "The Death Ride".

Anyone can sponsor Nancy's ride with a tax deductible contribution and help advance the Society's mission. Over 75% of your donation goes *directly* to patient services and research. To make a donation you can go to her website:

<http://www.active.com/donate/tntgsf/tntgsfNWhitla> or contact Nancy directly at 925-228-6797. You can also follow Nancy's progress on her web blog:

<http://www.nancycycling.blogspot.com/>

To assist Nancy in her fund raising efforts, I am donating a Party Lite stained glass tealight lamp to be given away to one of her donors. I'll have Nancy write the name of each donor on a raffle ticket then have her draw one ticket after the ride. The winner will receive the Hydrangea Tealight Lamp, which was priced at \$69.95 when it was available for purchase. Now that this item has been retired from the product line, it is a collectible and could be valued at even more! (I'll ship the lamp anywhere in the U.S. if the winner isn't local.)



Ye Old Timer's Auction, 2007.



CFMS Field Trips – North Seminar

Knowing Where You Are/Checking Land Status

By Dick Pankey, Contra Costa M&GS

Date: Saturday, April 12, 2008

Location: *Community Presbyterian Church*
200 East Leland Road
Pittsburg, CA 94565

Hosted by: *the Contra Costa Mineral and
Gem Society*

Schedule:

8:30 – 9:00 Registration and coffee
9:00 – 12:00 Seminar presentations
12:00 – 1:00 Lunch
1:00 – 3:00 Conclude Seminar presentations

Cost: Cost of the seminar is \$5.00, which includes coffee, and lunch of Hot Dogs with all of the trimmings, Chips and a Beverage.

Three presenters are scheduled to speak:

- Dave Muster will talk about 1.) Types of Land; 2.) Using Visuals and Compasses; 3.) Finding Markers; and 4.) Finding Townships, Section and Range.
- Dennis Freiburger will talk about – Practical GPS and Digital Maps – A user-friendly approach to using the Global Positioning System.
- Dick Pankey will talk about Personal Responsibility on Field Trips.

Since our club we are hosting this seminar we will need help from our members with to set up, take down and clean up after the seminar. We will also need help in the kitchen with the coffee and with the lunch. If you can help please arrive at 8:00 AM for set up. The more help we have the easier and faster it goes. Please give me a call or an e-mail to let me know that you will be there to help.

Directions: Take Hwy 4 to Pittsburg. Exit on to Railroad Ave. Go south on Railroad to Leland Rd., approximately ½ miles. Turn left and go ¼ mile, then turn right into church parking lot. Proceed past the church and turn left. Park and follow orange signs to Social Hall. Easiest access is from south side of church.

Please reserve your place at this seminar by notifying Dick Pankey at dickpankey@juno.com, no later than April 7th.



Snyder's Ranch, Valley Springs. 2007



Ed and Peggy at Snyder's Pow Wow 2007.



Snyder's Long Horns.



Pow Wow 'Tee Pees' 2007

ROCK HOUND RECEIPES

GEODE EGGS

– a “gem” of a snack

These hard-boiled eggs wrapped in sausage with a crispy coating are fabulous right out of the oven for breakfast on the go when you are in a hurry to get to the dig site, or cold as a snack for later. Enjoy!

1 lb. Jimmy Dean (*our boy from crystal country*) bulk pork sausage
 6 small hard-boiled eggs, peeled
 1 egg, lightly beaten
 1 packet of extra-crispy seasoned "Shake & Bake"

Directions:

Divide the sausage into 6 portions; flatten. Wrap each portion around a peeled egg. Roll in beaten egg, then in Shake & Bake.

Place on a rack in a baking pan (you can use a cake-cooling rack in the bottom of a broiler pan - line the broiler pan with foil to catch the drippings). Bake uncovered at 400 degrees for 30 minutes, turning every 10 minutes, until meat is no longer pink.

Tip: Spread out a large piece of wax paper on the counter. Make 6 thin patties out of the sausage and place them on the wax paper; then cut the paper in between the patties. Place an egg on each patty and easily remove the wax paper from the sausage and shape the sausage around the egg. Then roll in beaten egg and Shake & Bake.

Submitted by J Caskey

Foil Dinners

(Great idea for the Pow Wow)

This is a staple on family camping trips. (I started camping when I was 2 or 3 months old!) It's very easy, and clean up is a snap! Assemble a foil packet for each person, tailored to their specific tastes. (Be sure to use Heavy Duty Foil) Each packet contains a hamburger patty (I prefer lean sirloin, but we have even used "Veggie Burgers" they just require a little more butter) Add cut up veggies to the packets, on top of the hamburger patty. (Can use carrots, potatoes, onions, celery and bell peppers, etc.) Add one or two slices of butter to the top, pepper & salt to taste. Fold up the foil like rolling a paper lunch sack closed, then fold the two ends underneath to secure the packet closed. Place the foil packets directly onto charcoal. Cook for 10 minutes with the meat side down first, then 10 minutes on the other side, then a couple of minutes on the meat side again for those who like their meat well done. (Like me!)

Submitted by Bonnie Eichler

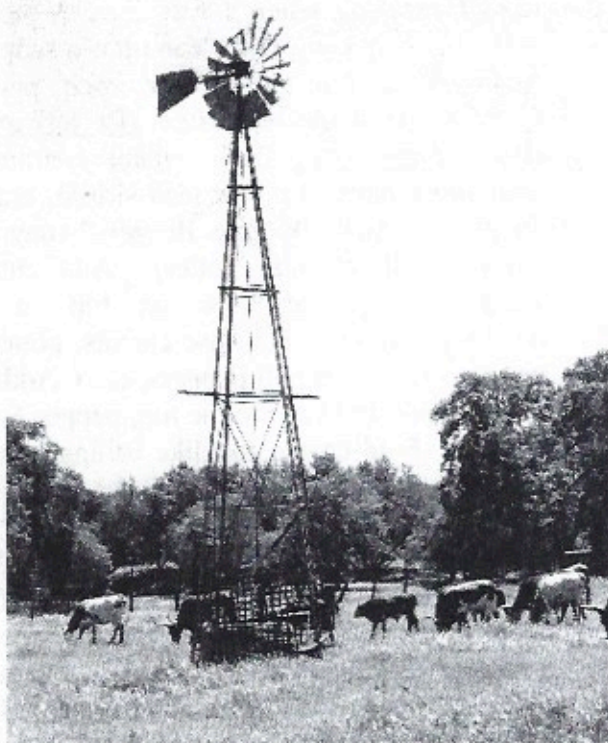
Treasurer's Notes

Just letting you know I am grateful for everyone's patience with my first night on the job. I received 2 deposits and wrote 2 checks and tried to figure everything out when I got home (with Dollar watching over me). I foresee the future improving as I familiarize myself with the new processes.

I am not accustomed to getting so much attention at the meeting, but I enjoyed visiting with everyone who came by with their requests. I want to give a special thanks to Mary, for her guidance and help through the check signing process.

See you soon.

Barbara (Bobi) Brown, Treasurer



The windmill at Snyder's Ranch.

Editor's Notes

Last year was my first experience at Snyder's Pow Wow. For anyone still on the fence – GO! It was so much fun! There are items of interest for everyone: rocks, jewelry, toys, tools, art, and lots of food. (*Save room at lunch time for a Navajo Taco!*) There are field trips to go on (that I wasn't aware of last year & want to get in on this year), the potlucks are always yummy, and the evening campfires are a blast! Remember: "What happens in Valley Springs, stays in Valley Springs!" You just have to be careful when you're bidding in the Ye Old Timers' Auction and you're all excited because you think that you are the one who is winning, *that you actually are the one who is winning.* (I made that mistake! But then after teasing me a little, Ken gave me the rock anyway. *Thanks Ken!*)

It's such a peaceful landscape, rolling hills and old oak trees. Be sure to bring your camera. Camp trailers are not required; I slept in a tent and made it just fine. If you don't want to cook any of your meals, there is a snack bar during the day, they even serve breakfast and "town" is just about a minute or so away. (*But you really don't want to skip the potlucks!*) So make plans, be it for the day, over night or all weekend. This is an event you don't want to miss!



Bonnie Eichler, Editor

E-mail articles and reports to Bonnie at BonnieE1969@sbcglobal.net
Remember the deadline is the 20th of each month.

California Federation of Mineralogical Societies Newsletter can be read at
<http://www.cfmsinc.org/>

CONTRA COSTA MINERAL & GEM SOCIETY
PO Box 4667, Walnut Creek, CA 94596

**General Meeting: Second Monday of the month at 7.30 p.m., except First Monday
in June**

Centre Concord, 5298 Clayton Rd, Concord, Tel: 925-671-3466
**(Clayton Fair Shopping Center, about 0.2 miles on Clayton from Ygnacio Valley
Road)**

Cross Street is Balhan Drive, next to Clayton Valley Bowl, Free Parking.

Membership Fees: Initiation \$5; Regular Member \$10, Associate \$5, Junior \$1

VISITORS ARE WELCOME! BRING A FRIEND!

Board and Committee Members – 2008

<i>President</i>	Mary Hicks	maryhicks@comcast.net	(925) 779-0698
<i>1ST V.P. Programs</i>	Harry Nichandros	Nichandros@juno.com	(925) 674-7055
<i>2ND V.P. Field Trips</i>	Dennis Freiburger	dennisfrei@aol.com	(925) 680-8936
<i>Secretary/Past Pres.</i>	David Kleesattel	daveklees@aol.com	(925) 798-8240
<i>Treasurer</i>	Barbara Brown	bbag@chevron.com	(925) 609-8460
<i>Publicity</i>	Mary Jernigan	m10jernigan@yahoo.com	(925) 429-2748
<i>Federation Director</i>	Dick Pankey	dickpankey@juno.com	(925) 439-7509
<i>Property/Show Chair</i>	Sam Woolsey	sdwools@earthlink.net	(925) 837-3287
<i>Historian</i>	Hazel Woolsey	sdwools@earthlink.net	(925) 837-3287
<i>Hospitality</i>	Naomi Morgan	-----	(925) 672-2458
<i>Display</i>	Terry Caskey	tcaskey@comcast.net	(925) 689-2119
<i>Education</i>	Rana Owen	ranas_weekenders@yahoo.com	(925) 827-0471
<i>Ecology</i>	Sharon Neuhauser	-----	(925) 687-7816
<i>Membership</i>	Kim Kleesattel	daveklees@aol.com	(925) 798-8240
<i>Refreshments</i>	Mary Bufton	-----	(925) 935-2081
<i>Sergeant of Arms</i>	Sherb Brown	-----	(925) 376-0658
<i>Bulletin Editor</i>	Bonnie Eichler	BonnieE1969@sbcglobal.net	(925) 944-1331
<i>Librarian</i>	OPEN		(version 1/2008)

