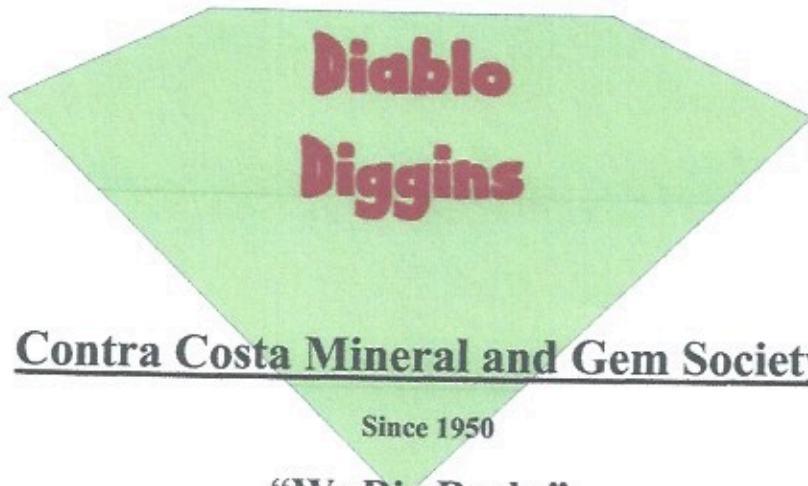




Vol. 64, No. 8



## Contra Costa Mineral and Gem Society

Since 1950

**“We Dig Rocks”**

This Newsletter is available by e mail - contact the Editor



Concord, CA

August 2016



### **PRESIDENTS MESSAGE**

Hi everybody. Hope you're all getting out to go rockhounding or doing whatever lapidary activity you do to keep busy. It's been so hot recently that inside lapidary activities are the best. Unfortunately, most of my lapidary equipment is in the garage which is just too hot this time of year. Even sitting on the back patio with my rock saw is a challenge. Luckily I already have more slabs than I'll ever use, so I do really need to cut more rocks (although I really enjoy seeing what's inside).

A few things coming up for the CCM&GS that are very important. The annual Show is back to the first weekend in November. We need all club members to help out and make this a big success. Harry Nichandros is organizing the Show and will be looking for volunteers. We also need some people who are interested in being on the Board of Directors for the club. We will be voting for new officers in October and are looking for people to get involved. This is very important to the longevity of our club.

I look forward to seeing you at the August meeting. My crazy schedule is allowing me to be in California rather than Alaska this month. I appreciate all the help that I have received from the Club members while I have been traveling so much this year.

Dave Kleesattel  
President

#### NEXT GENERAL MEETING

**Monday August 8, 7:30 PM**

**Centre Concord**

#### AUGUST PROGRAM

Rock Tumbling

Mary Hanjes

August Program.....	2
Meeting Minutes.....	3,4,5
Bead In.....	5
Education.....	5
2016 Annual Show.....	6,7,8
Birthdays/Anniversaries.....	9
Rockhounds on a Roll.....	10,11
Federation Show.....	12
Display.....	13
Club Calendar.....	16

CCM&GS Program for August 8, 2016

## Rock Tumbling

Assisting Nature's Beauty Parlor

Nature has been tumble polishing rocks for billions of years. Lots of beautiful rocks from the stream and seashore went into my pockets when I was a small kid. Most of us still smile thinking about that table top tumbler when we were a little older. Lots of us still tumble. I personally have several bowls of tumbled rocks around the house and each one always gets a smile as I walk by.

Mary Hanjes has volunteered to share her joys and knowledge of rock tumbling.



Dennis Freiburger, Program Chairman

### **Board Meeting**

Wednesday August 3, at 7:00 PM

**New Articles for August *Diablo Diggins***

**Due Date, August 15, 2016**

**CCMGS Board Meeting**-7:15 pm to 8:30 pm, July 6, 2016 2520 Stanwell Dr., Concord, CA

Present: David Kleesattel, Kelly Plumb, Mary Hicks, Mary Jernigan, Paul Black, Dick Pankey, Terry Caskey, Mary Hanjes. Absent: Dennis Freiburger, Bonnie Eichler, Therese Clark, Harry Nichandros, Debbie Blevins, Cheryl Morgan.

OPEN POSITIONS: Publicity, Hospitality, Ecology, Sergeant at Arms.

SLATE FOR 2017 OFFICERS: Mary Jernigan is leading the committee to develop the Officer Slate for 2017. The slate is announced at the September General Meeting and published in the newsletter, read again at the October General Meeting and voted on. Elected officers are sworn in at the December general meeting. The slate must be announced at the September meeting. Anyone at the meeting can propose additional persons interested that are not on the slate presented. At the October general meeting, again a verbal proposal for qualified members can be proposed. Then the vote will occur. President, Vice President of Programs, Vice President of Field Trips, Treasurer, Secretary, Federation Director are the positions that must be voted on. For sure, we need a volunteer for a new President as Dave Kleesattel has given notice that his work in Alaska requires he not act as President in 2017.

APPOINTED POSITIONS. To clarify, the appointed positions are open for volunteers at this time too. The President appoints club members in good standing to the following positions. Publicity, Property, Hospitality, Display, Librarian, Show, Sergeant at Arms, Historian, Education, Refreshments, Membership, Bulletin Editor, WEB Site, Ecology. Descriptions for these positions are in the Bylaws. Contact Mary Hicks, Secretary for a copy of the Bylaws. It is very important to rotate members through positions to make sure we can ensure the continuity of the operation of our club. No one owns these positions and so please help keep our club running smoothly, learning while doing the position is how we all start out. Discuss duties with Mary Jernigan or Dave Kleesattel. It is nice to have volunteers for the new president to consider for appointed positions before the end of the year.

The next BOD meeting is on Wednesday, August 3rd, at Dave Kleesattel's office, 7 pm., 2520 Stanwell Dr., Concord, CA.

BOD Minutes--Mary Hanjes moved to approve the July BOD minutes as posted in the newsletter, Kelly Plumb seconded, all ayes. No bills presented that were not approved in the budget. Little correspondence received, Fiesta of Gems and Minerals, the 62<sup>nd</sup> Annual San Francisco Gem and Mineral Society, Saturday and Sunday, August 13 & 14, the cards will be put on the table at the general meeting. [www.sfgemshow.org](http://www.sfgemshow.org)

Old Business. The club annual Old Fashioned Picnic was held on June 18<sup>th</sup>. It was well attended. The Chair for this type of activity, Hospitality, remains vacant. Thank you to member Joanne Caskey for organizing this great social activity. We lack the leader to organize the December Holiday Season meeting. We need a volunteer to take on the Hospitality Chair. Contact Dave Kleesattel if you will support the club. The auction will be at the September meeting. The WEB site had some old information as a guest came to a general meeting on an incorrect date. The secretary is to order the officer and chair bars for 2015 and 2016. The Business Continuity binder the Secretary is working on will take several more months to get to a draft stage worth comments.

New Business. Membership Chair Mary Jernigan proposed approval for an applicant. Caryl Taraldson was recommended to become a member, all ayes. Welcome Caryl. Mary Jernigan is updating the membership application. Mary Jernigan proposed the changes, seconded by Dick Pankey, all ayes. Cheryl Morgan, new Display Chair was at the last general meeting. Paul will go over the duties as there was no report or pictures in the July newsletter. None of the regular picture taking members were present, we were reminded to use a cell phone to document the displays if needed. Mary Hanjes, Treasurer, reminds us that she has a new email address. [mrhanjes@gmail.com](mailto:mrhanjes@gmail.com)

Received CFMS acceptance of the club's nomination for Rockhound of the Year, Gary Casillas. Dick Pankey will present the award to Gary at the July

General Meeting. Discussion about the bad habit that some members are late to pay dues. The Bylaws state that if dues are not paid by January, they are late and benefits are to be stopped. Mary Jernigan says that she has to follow up to get some to pay, the Board advised her that she is to follow the Bylaws. There should be a reinstatement charge of \$5 in addition to the normal annual fee of \$10. Replacement badges are at cost which is currently around \$9 to \$10. Mary Hanjes, Treasurer, said there were no outstanding checks. Librarian Paul Black reported he has a new course on a thumb drive, a college level Geology class from Great Courses.

**Committee Reports.** Federation Director Dick Pankey said he has received more member email addresses so he can send them news about access and use of Public Lands. He continues to get donated stamps from members, Don and Margaret Henrich, Mary Hicks, Mark Bufton and others. Kelly Plumb said news on field trips and shows are in the newsletter. All reports are due to Terry Caskey no later than July 18. Special note. Editor Terry Caskey is interested in being replaced as editor of the Diggins newsletter. Ask him about this if you are interested. Show related items. Paul Black will not be at the show this year, Mary Hicks volunteered to put in his case at the show. For members tumbling rock for the grab bags, the BOD said that the club can supply grit and rock and the member can retain 50% of the tumbled stone (policy statement).

**Historian Item-**Jeanne Lois Duncan resident of Pleasant Hill, and a past member of the club, passed away. 04/02/1924 to 07/05/2016. Her husband Bob was also an active club member.

Mary Hicks, Secretary

**CCMGS General Meeting**-July 11, 2016, Centre Concord, Concord, CA.

The CCM&GS General Meeting started at 7:30 pm with the Pledge of Allegiance which was lead by Connie Klein, President Dave Kleesattel was not at the meeting and Vice President Kelly Plumb led the

meeting. Vice President Kelly Plumb's Safety Moment was about how to handle rescuing abandoned kittens. She had a kitten with her that she was fostering for her local shelter. The black kitten was named Rocky. She said before picking up a kitten, take a moment to see if it is really abandoned or just temporarily separated from mom. Many kittens end up being put down by a shelter due to the need to feed it every few hours.

Membership- Mary Jernigan reported about the upcoming election process. Though some members may be available to serve again, for sure the President position comes open this time around. (See details in the BOD minutes). Mary Jernigan also thanked members who have gotten their late due payments to her for 2016. She announced that a new member was approved, Caryl Taraldson.

Kelly Plumb announced field trip information. Information is detailed by her in every newsletter and she brings hardcopy information to the meetings. There is a trip lead by Debbie Bunn and Doug True in Oregon. Dick and Betty Pankey are having a Silver Pick Field Trip at their home in Pittsburg starting this following weekend.

Paul Black announced that Harry Nichandros had brought culled books from the Library and these are available for the taking. Paul will be bringing new videos to the next meeting.

Bonnie Eichler said that there was a wire wrapping class coming up.

Dick Pankey, Federation Chair had a sign up sheet for rockhound involvement and for getting time sensitive news out to members on Public Lands access activities. Dick presented member Gary Casillas with the certificate of recognition as Rockhound of the Year for the club.

Cheryl Morgan announced the displays and attendees were reminded to vote.

Next BOD is 8/3 and General Meeting 8/8.

Harry Nichandros, Show Chair for 2016, requested members to sign up on the job sheets

and members were reminded to support the club by doing some job. There is need for volunteers for Friday Lunch and Dinner. Displays, see Therese. See Harry about doing critters, Hazel is doing grab bags.

See Mary Hanjes about grit and rocks to tumble. The For Sale Board is in the back of the room.

Dennis Freiburger reminded all to silence their cell phones. Also, please do not enter the Centre before 6:30 pm per our contract and be out by 10:00 pm. The room must be left vacuum ready.

Contact Dennis if you want to help with the auction at the September meeting. Do not pick up the presenters items without asking. The program about The Art of Gem Carving by David Marshall was over at 9:05 pm.

Mary Hicks, Secretary

Recipe by Bonnie Eichler

### **Banana Split Fluff Salad**

- 1 - 3.4 ounce box instant banana pudding
- 1 - 20 ounce can crushed pineapple (do not drain)
- 1 - 8 ounce container Cool Whip
- 1 cup mini marshmallows
- 1/2 cup finely chopped pecans or almonds + 2 Tablespoons for garnish
- 1/2 cup mini chocolate chips
- 2 ripe bananas, sliced
- 1 - 10 ounce jar maraschino cherries, halved

Stir together the pudding mix and pineapple until dissolved and thickened. Fold in the Cool Whip.

Gently stir in the marshmallows, nuts, chocolate chips, bananas, and cherries.

Refrigerate at least 1 hour to chill. Makes about 4 cups salad.

### **Education Corner**

Currently there is only 1 future class scheduled, but I am working on a couple of other possible classes. Kelly Plumb will be teaching a Basic Wire Wrapping class on Saturday, October 15<sup>th</sup> from 2 - 5 pm. As of the writing of this article, there are 4 spaces still available. The class will be held at Debbie Blevins home (there will be no meeting of the beading group on that day.)

If you were at the July general meeting, then you saw the beautiful carvings by David Marshall. I have asked him how much it would cost to do a class for our members and what tools the students would need to have to take the class. David should be getting back to me soon with the information. He may have an extra Foredom or two to loan, but I don't know how many. If you want to take the class but don't have a Foredom, check to see if you can borrow one from someone. The club will reimburse the first \$10 of the cost of the class fee per member that attends the class.

Without a location to hold the class, we cannot have the class. If anyone can host the class, please let me know.

Bonnie Eichler  
Education Chairperson

## **Bead-In**

**Saturday - August 6, 2016**  
**Debbie Blevins' House**  
**2:00 - 5:00**

The next Bead-In is going to be held at Debbie's house on Saturday, August 6, 2016 at 2:00 pm. We have not yet decided on the project but will keep you informed if we decide on a group project.

As always, you may work on your own project too. It's just fun getting together.

Please RSVP to Debbie Blevins at [OHB@Astound.net](mailto:OHB@Astound.net) or call 925-680-6562 if you plan to attend. I will need to know how many places to set up.

We welcome light snacks to share.

The Annual Gem & Mineral Show of the Contra Costa Mineral & Gem Society

# Exhibit & Display Case Application

Friday–Sunday, November \_\_\_ – \_\_\_, 20\_\_ (show dates)

**Show Location & Display Times**

**Location:** Centre Concord, 5298 Clayton Road, Concord, CA ([map](#))  
**Setup:** Friday 2:00 pm – 8:00 pm and Saturday 9:00 am – 10:00 am  
**Show Hours:** Saturday and Sunday, 10:00 am – 5:00 pm (both days)  
**Removal:** Sunday 5:00 pm – 8:00 pm

**Submittal & Acceptance:** Submit ONE Application Per Case to the address below. If you do not receive a response within 10 days, please email or phone (your application may not have been received/accepted).

**Address:** Therese Clark, Display Chair, 2119 Gill Dr, Concord, CA 94520, (925) 348-3919, [ThereseClark@sprintmail.com](mailto:ThereseClark@sprintmail.com), **Website:** [ccmgs.org/contact\\_us](http://ccmgs.org/contact_us)

**EXHIBITOR INFORMATION**

Exhibitor's Name: \_\_\_\_\_ Phone: \_\_\_\_\_  
 Address: \_\_\_\_\_ State: \_\_\_\_\_ ZIP: \_\_\_\_\_  
 Email Address: \_\_\_\_\_  
 Member of CCM&GS \_\_\_ or \_\_\_\_\_, or Dealer \_\_\_\_\_, or Other \_\_\_\_\_  
**Material to be displayed:** Crystals \_\_\_, Minerals \_\_\_, Lapidary \_\_\_, Fossils \_\_\_, Jewelry \_\_\_, Faceting \_\_\_, Carving \_\_\_, Fluorescents \_\_\_, Other \_\_\_\_\_  
**Case Theme:** Memorial \_\_\_, Educational \_\_\_, Novelty \_\_\_, Fluorescent \_\_\_, Other \_\_\_  
**Display Features:** Background color: \_\_\_\_\_, Display items out of case: \_\_\_\_\_  
**Placement request:** Your ideas to help us place it at its best advantage in the display area: \_\_\_\_\_  
**Multiple Cases:** If display case space is limited, this case is my First \_\_\_, Second \_\_\_, Third \_\_\_ priority  
**Dinner:** Number of people to attend the complimentary Friday Night Dinner (about 5:30 pm): \_\_\_\_\_

**Do You Need a Case?** (If so, please initial below)

\_\_\_ **NO, I Have My Own Case:** Description of your case: Width: \_\_\_\_\_, Height: \_\_\_\_\_, Depth: \_\_\_\_\_, Case Front (Upright or Slant): \_\_\_\_\_, Wattage: \_\_\_\_\_. Is it locked? \_\_\_\_\_. If locked, provide alternate contact for keys: \_\_\_\_\_

\_\_\_ **YES, I Need to Use a Club Case:** The club has a limited number of cases to loan, on a first come basis. The club does not provide liners or risers. Club cases are standard 4' x 2' x 2' (whd). Inside dimensions are 46-1/4" x 22-3/4" x 22-1/4" (whd) and 23" deep at top (due to sloping front). The case sides and back are a finished light-colored wood. Two 100-watt floods illuminate from the top. **NO TAPE, STAPLES, TACKS, DRILL HOLES, OR OTHER ALTERATIONS ARE TO BE MADE TO THE CASE OR LIGHTING.** Please confirm your understanding: Initials \_\_\_\_\_

**AGREEMENT**

Exhibits are not to be removed until Sunday after the show closes at 5:00 pm. Once the show has started you are not to open your case without the exhibit or show chairman's authorization (This protects your exhibit). If the exhibit is not removed by 8:00 pm Sunday, Show staff will remove it, but its return or condition cannot be assured. Club cases are not to be altered in any way. CCM&GS assumes no responsibility for loss or damage to exhibitor's property or items displayed at the show.

I agree to the above and wish my display case to be considered for presentation at the CCM&GS Show.

\_\_\_\_\_  
Signature

**REVIEWED** By \_\_\_\_\_ Date: \_\_\_\_\_  
 Approved \_\_\_, Approved, if space avail \_\_\_, Declined \_\_\_  
 Comment: \_\_\_\_\_

## Create Your Own Display Case – A How To

Have you ever considered creating a display case for our annual show? It is a fun and easy way to show all of us your skills, interests, and what you love. Our cases have finished sides - the bottom of the case is unfinished. So, the hardest thing to figure out is what to display and how to cover the bottom of the case.

Here are just a few ideas for what to display in your case. Equipment for rock hounding or mining, rocks thru geologic time, your hand made jewelry, your lapidary work, focus on a type of mineral, gem, or rock, ie: fossilized plants, cabs, fossilized animals, a special interest from your collection, volcanic rock, agates, eye candy, the geologic process.... The possibilities are endless.

There are several easy ways you can make a case very attractive. It all depends upon what you want to display.

The simplest display is to use an oversized scarf (better a solid color than with a pattern) or a large piece of material in a color that compliments your material. Simply drape the material you choose over the bottom of the case and add your items. If you want it to be more interesting - add some height under the material that you can put some of your items on so that everything is not on the same level. What you use to raise up your display can be as simple as a cardboard box. You can create a shelf by using foam core with a box under that. If your item is heavy the box will of course have to be close to the size of the foam core so your things don't fall over. If you are going to display small items it's important to elevate them so they can be seen easily. The internet is full of sites that want to sell you something to display earrings, necklaces, etc. Please remember when planning your case display that you cannot alter the case in any way with tape, nails, push-pins, or drill holes.

Think about how museums display small items. They know what they are doing. Look at cases at other shows for ideas about displaying your material. If you see something you like take a picture of it and try to duplicate it. If you want some styrofoam contact Kelly Plumb, she can get you all you want. Styrofoam is a great, lightweight way to create height. Cover it with your material and you are done.

Advanced ideas: The tops of our cases are pegboard so you can hang something thru the holes in the pegboard using fishing line. I have seen cases that add mirrors so the back of the piece can be seen. Your imagination is the limit of what you can do in your display case.

What to do first. Commit to creating a case. Let me know you made that commitment by completing the application and getting to me either a hardcopy, snail mail to me, or email to me Thereseclark @ sprintmail.com (no spaces).

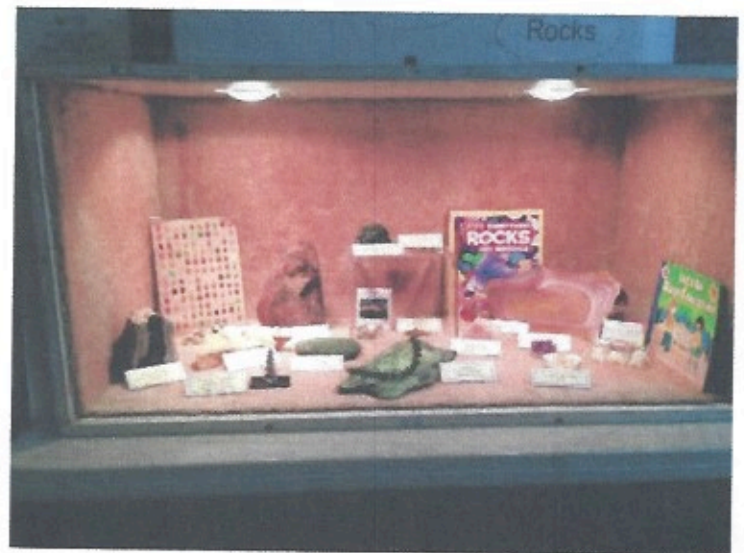
Happy planning,  
Therese Clark  
Display Chair

## Demonstrators Needed!

Every year at the show our visitors stand fascinated watching all of the wonderful things that can be done with and around the rock-hounding hobby. We need YOU to show them how it is done! That's right! For every fascinated visitor there is someone just like you showing off what they know how to do. Think you are not good enough? Wrong! We are all critical of our own efforts. You may know that you don't know everything, but your average uninitiated person only knows that you know a lot more than they do. If someone has been around long enough to notice what you don't know then they have also been exactly where you are now and know exactly how much courage it takes to step up and help. The show is coming up faster than you think and we need all of our volunteers in place. If you cannot demonstrate then please consider one of the many other volunteer opportunities.

As volunteer coordinator I would like to thank those of you who have already stepped up! So far our Gold Panning experts have signed on again this year. Dick Friesen and Andrea Rodriguez are returning with Fixed Point Hard Stone carving and Wire Weaving. Barrier Bieler and an unnamed assistant are demonstration Faceting techniques. Richard Dennis and Charles Jorgensen will be sharing Soft Stone Carving. Rana Owen has agreed to do Copper Enameling again. Dick and Betty Pankey will be doing their ever popular Make Your Own Rock Collection and Wire Wrapped Rings. Please consider donating small specimens to Dick for this project. He needs about 500 of any particular item. Cheryl Morgan is organizing her Rock Painting team. Alan Felker and Steve Leidental will be doing Cabbing again (and no, I did NOT give Alan a choice.) Dennis Freiburger will be sharing his knowledge of Gem identification. Dave Kleesattel may do Rock identification if his work schedule allows, but I would love to have a backup Geologist willing to step up if he is called away. I am still working in Semion Mirkin for flex Shaft Hard Stone Carving and Naomi Morgan for Intarsia Basics. (Come on Naomi! I need you!) I still need someone to demonstrate Wire Wrap and Beading. Did I miss anyone? If I did so, then many, many apologies. Do you see someone already doing what you wanted to demonstrate? Please let me know you are willing. These folks may just want a break, or they might have last minute emergencies. It doesn't hurt to be prepared. Do you do something

Kelly Plumb





## Refreshments

Refreshments and Snacks for the General Meeting.  
Thank You to the Club Members that bring snacks to our General Meeting.

If you are not able to attend the meeting, contact another member and trade snack responsibility. You can also call the Refreshment, Hospitality, or Membership Chairpersons and let us know if you are not attending this month. Vickie Hotopp is in charge of our refreshments and she really appreciates sharing your delicious snacks at the meetings.

Thank you!

Mary Jernigan- Membership

### August Refreshment List

Dick & Susan Dennis  
Bonnie Eichler  
Cheri Elliott  
Mike Fedoroff  
Alan Felker  
Brenda Flowers  
Dennis Freiburger & Patty Wintroath  
Suzanne Garrett  
Louise Gilley & Mark Blackman  
Mary Hanjes  
Cathy Hays  
Donna Heath  
Christine Henningson



## August Birthdays

If you are a current member and do not see your birthday or anniversary listed, please drop me a note so I can update my record.

Thanks, Mary Jernigan



## Happy Birthday!!

Michael Thompson	8/6
Vikki Hotopp	8/16
Rana Miller Owen	8/17
Caryl Taraldson	8/27
Jon Marangoni	8/30



## August Anniversaries

Naomi Morgan	8/7
Donna Albrecht	

**ROCKHOUNDS ON A ROLL!**

I will not be at the August meeting. Instead I will be in Oregon with Doug True and the folks attending the Albany OR show, the NFMS field trip to Prineville and surrounding areas. Since I have been putting out the information in the newsletter and at meetings, I am hopeful that I will see some of you there! For those of you who see this and want to take off at a screaming run to join us here is a brief description.

**After the NFMS/AFMS Meetings****Prineville, Oregon****August 3-7, 2016****Doug True, NFMS Field Trip Chair**

NO specific trips are setup in advance. Trips will leave on August 3, 4, 5 and 6th. There will be a number of locations looking for Agate, Petrified Woods and Thunder eggs. Trips will go to Richardson Ranch, Alex McDonalds Ranch, Friends Egg Beds (has been closed for a while) Hampton Butte, Bear Creek, Maury Mountain and several other locations. Several locations will be fee collecting and some will be free. All collectors will have to sign a liability waiver to attend the trips.

Base camp will be at the Crook County Fair Grounds, you will need to call (541) 447-6575 and make arrangements for RV camping or Dry Camping.

We will try and have several potlucks. Bring items you would like to sell or swap, Setup Sunday morning the 7th. Bring something for the live auction, to benefit the NFMS, which will be held after the swap.

If you have any Questions call (406) 670-0506, or email [dtruefossils12@yahoo.com](mailto:dtruefossils12@yahoo.com).

**Club Shows:****August 7 - 9: NIPOMO, CA, Orcutt Mineral Society**

Nipomo High School, 525 North Thompson Avenue

Hours: Fri/Sat 10 - 5; Sun 10 - 4, Contact: Wayne W. Mills, (805) 481-3495

Email: [wwmills50@hotmail.com](mailto:wwmills50@hotmail.com), Website: [www.omsinc.org](http://www.omsinc.org)**August 13 - 14: SAN FRANCISCO, CA, San Francisco Gem & Mineral Society**

San Francisco County Fair Building, 9th Avenue &amp; Lincoln Way

Hours: Sat. 10 - 6; Sun. 10 - 5, Contact: Ellen Nott, (415) 564-4230

Email: [ellen\\_nott@yahoo.com](mailto:ellen_nott@yahoo.com), Website: [www.sfgemshow.org](http://www.sfgemshow.org)**GEM FAIR DATES:****August 2016**

**5-7—PLEASANTON, CALIFORNIA:** Wholesale and retail show; Gem Faire Inc, Alameda County Fairgrounds; 4501 Pleasanton Ave; Fri. 12-6, Sat. 10-6, Sun. 10-5; Admission \$7 weekend pass, Children 11 and under free; Fine jewelry, precious & semi-precious gemstones, millions of beads, crystals, gold & silver, pearls, minerals, fossils & much more at manufacturer's prices. Exhibitors from around the world will be on site. Jewelry repair & cleaning while you shop. Free hourly door prizes. ; contact Yooy Nelson, (503)-252-8300; e-mail: [info@gemfaire.com](mailto:info@gemfaire.com); Web site: <http://www.gemfaire.com>

**6-7—WALNUT CREEK, CALIFORNIA:** Show and sale; Pacific Crystal Guild, Civic Park Community Center, 1375 Civic Drive, at Broadway; Sat. 10 am-6 pm, Sun. 10 am-4 pm; Adults \$10, Children 12 and under are free; Get ready for the August 6-7 SPRING CONTRA COSTA CRYSTAL FAIR which includes a magical

mix of crystals, minerals, beads, and jewelry. Whether it's stone beads from Nepal, amethyst geodes from Madagascar, jade from China, or jewelry from northern California artisans – you'll find it at the Crystal Fair at low market prices. You'll also find an aura camera, tarot reader, sound healer, massage therapist, reiki master and many others – 30 booths in all. The exact location is the Civic Park Community Center at 1375 Civic Drive at Broadway in Walnut Creek. The hours are 10am to 6pm on Saturday, August 6; and 10 am to 4 pm on Sunday, August 7. Admission is \$6 (under 12 free). There is plenty of free parking and the downtown Walnut Creek BART station is only 4 blocks away. ; contact Jerry Tomlinson, PO Box 1371, Sausalito, CA 94966, (415) 383-7837; e-mail: [jerry@crystalfair.com](mailto:jerry@crystalfair.com); Web site: [www.crystalfair.com](http://www.crystalfair.com)

**12-14—SACRAMENTO, CALIFORNIA:** Wholesale and retail show; Gem Faire Inc, Scottish Rite Center; 6151 H St; Fri. 12-6, Sat. 10-6, Sun. 10-5; Admisssion \$7 weekend pass, Children 11 and under free; Fine jewelry, precious & semi-precious gemstones, millions of beads, crystals, gold & silver, pearls, minerals, fossils & much more at manufacturer's prices. Exhibitors from around the world will be on site. Jewelry repair & cleaning while you shop. Free hourly door prizes. ; contact Yooy Nelson, (503)-252-8300; e-mail: [info@gemfaire.com](mailto:info@gemfaire.com); Web site: <http://www.gemfaire.com>

**13-14—SAN FRANCISCO, CALIFORNIA:** Show and sale; San Francisco Gem & Mineral Society, San Francisco County Fair Building; 9th Ave & Lincoln Way, Golden Gate Park; Sat. 10-6, Sun. 10-5; Adults \$10, Seniors \$8, Students \$8, Children under 12 free; 62nd Annual Golden Gateway to Gems Show & Sale, "Fiesta of Gems & Minerals." Featuring demonstrations, kids' activities, mineral and gem identification. Convenient transit access and parking garage nearby.; contact Ellen Nott, 4134 Judah Street, San Francisco, CA 94122, (415)-564-4230; e-mail: [ellen\\_nott@yahoo.com](mailto:ellen_nott@yahoo.com); Web site: [www.sfgemshow.org](http://www.sfgemshow.org), [www.sfgms.org](http://www.sfgms.org)

**19-21—SAN DIEGO, CALIFORNIA:** Wholesale and retail show; Gem Faire Inc, Scottish Rite Center; 1895 Camino del Rio S; Fri. 12-6, Sat. 10-6, Sun. 10-5; Admission \$7 weekend pass, Children 11 and under free; Fine jewelry, precious & semi-precious gemstones, millions of beads, crystals, gold & silver, pearls, minerals, fossils & much more at manufacturer's prices. Exhibitors from around the world will be on site. Jewelry repair & cleaning while you shop. Free hourly door prizes. ; contact Yooy Nelson, (503)-252-8300; e-mail: [info@gemfaire.com](mailto:info@gemfaire.com); Web site: <http://www.gemfaire.com>

**26-28—COSTA MESA, CALIFORNIA:** Wholesale and retail show; Gem Faire Inc, OC Fair & Event Center; 88 Fair Dr; Fri. 12-6, Sat. 10-6, Sun. 10-5; Admission \$7 weekend pass, Children 11 and under free; Fine jewelry, precious & semi-precious gemstones, millions of beads, crystals, gold & silver, pearls, minerals, fossils & much more at manufacturer's prices. Exhibitors from around the world will be on site. Jewelry repair & cleaning while you shop. Free hourly door prizes. ; contact Yooy Nelson, (503)-252-8300; e-mail: [info@gemfaire.com](mailto:info@gemfaire.com); Web site: <http://www.gemfaire.com>

### September 2016

**3-4—HANFORD, CALIFORNIA:** Annual show; Diggins Productions, Hanford Civic Auditorium ; 400 N Douty; Sat. 10-6, Sun. 10-6; Admission \$3, Children free; Museum quality fossil display, gold panning demonstration, faceting demonstration, free Prize drawing ; contact Kathy Corbett, 341 cedar st., Hanford, CA 93230, (559)-904-4795 / (559)-924-4052; e-mail: [Corbett1@sbglobal.net](mailto:Corbett1@sbglobal.net)

**16-18—PLACERVILLE, CALIFORNIA:** Annual show; 77th Annual California Federation of Mineralogical Societies Show & Convention Hosted by the El Dorado County Mineral & Gem Society, El Dorado County Fairgrounds; 100 Placerville Dr; Fri. 10-5, Sat. 10-5, Sun. 10-5; Adults \$7, Seniors \$6, Children under 12 free; Special prize drawings, minerals, exhibits & demonstrations, gems, jewelry, gold, slabs, tools, meteorites, displays, fossils, kids activities, geode cutting, fluorescent tent, silent auction and club bargain table, gold related lectures, gold panning and kids gem search.; contact Barbara Terrill, 3721 Larkspud Lane, Cameron Park, CA 95822, (530)-676-2472; e-mail: [info@eldoradomineralandgem.org](mailto:info@eldoradomineralandgem.org); Web site: [www.cfms2016show.com](http://www.cfms2016show.com)

## News of the CFMS

77th Annual

California Federation of Mineralogical Societies

Show and Convention

September 16, 17 and 18, 2016

Hours: 10:00 a.m. to 5:00 p.m. Daily

Proudly Hosted by

The El Dorado County Mineral & Gem Society

Placerville, California

Admission is Adult \$7.00 per day; Senior (60+) \$6.00 per day; Active Military \$6.00 per day. Kids under 12 are free when accompanied by an adult. For more information and details check out the Show web site: [www.cfms2016show.com](http://www.cfms2016show.com). **This show is being held in conjunction with the World Gold Panning Championships. This is going to be a jam packed, fun filled week.** In addition to historic mines, museums and being next to Eldorado National Forest and Lake Tahoe, there will be many festivities happening in the local area throughout the week in honor of El Dorado County's Gold Week.

I have a "ton" of stamps to turn in at the Directors' meeting in September. The stamp cutters have been hard at work this spring and I get donation packets from 3 or 4 people at every meeting. Thanks to all of you. Get started now and become a stamp cutter. It is easy. If you miss this time I will be turning in stamps again at the Directors' meeting in November.

Six more people signed up for the Involved Rockhound e-mail list. We now have 11 CCM&GS members on the list. I will have the signup sheet at our next meeting. Members of the Involved Rockhounds e-mail list will get the latest information on what is happening with our Federally managed lands that affect rockhounds and the general public. To maintain access and use of the public land we need to know what is going on and we need to participate in the management process. The information I will be sending you comes from the BLM, FS, ALAA, CFMS PLAC Committee, and other government agencies. Get in the know; be informed.

By Dick Pankey, Federation Director

**Display Report**

By Cheryl Morgan

There are four competitive categories each month. Everyone is invited to vote on the entries in each category. The winner in each category receives a prize of five dollars, and the person who has won the most competitions for novice cab during the year will advance to "pro" status and be awarded a Diablo Dan silver pin.

**Novice Cabs** – No entry this month

**Shape of the Month** – 2 Entries

- Ø **Barrie Bieler – Jasper/Agate**
- Ø Donna Albrecht –Flames in Water Agate

**Pro Cabs**- 5 Entries

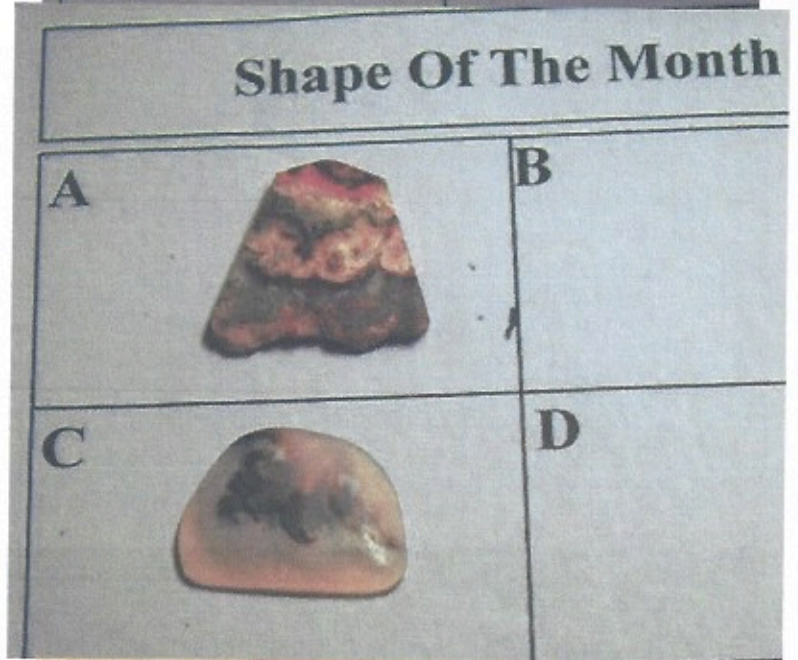
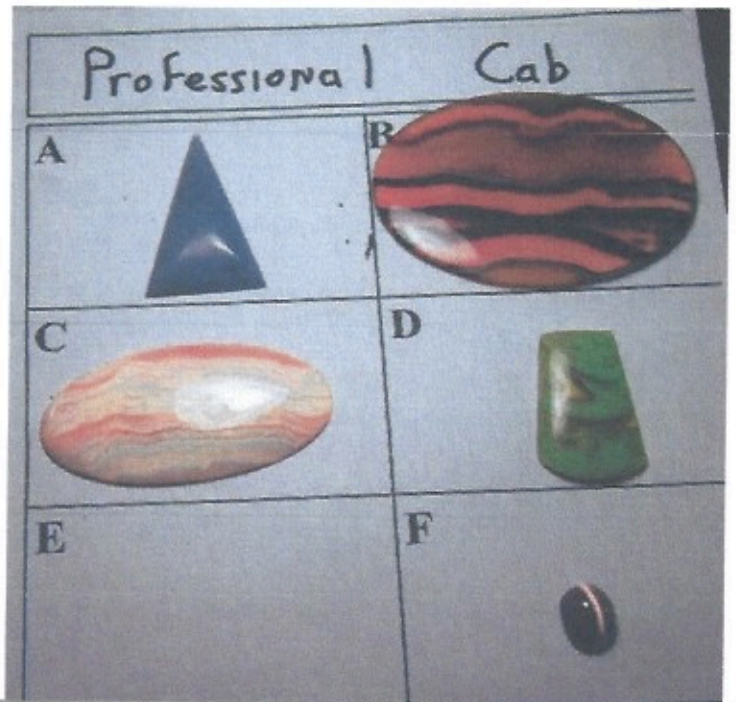
- Ø Barrie Bieler –Nephrite
- Ø **Joe Yarbrough – Brazilian Agate**
- Ø Paul Black – Banded Agate
- Ø Donna Albrecht – Green Glass
- Ø Mary Bufton – Fiber Optic Stone

**Faceted Gems** – One entry

- Ø Barrie Bieler – Amethyst (unchallenged)

**2016 Shape of the Month Shapes**

- Freeform August - Triangle
- September - Auction Night (no displays)
- October – Marquis (Cat’s eye) November – Oval
- December - No competition (Holiday party)



## SAFETY FIRST

Many of you will be heading out this summer on rock hounding trips with family and friends. I wanted to take this opportunity to remind everyone to not only remember the safety of their children, but also their pets, not only while on these trips but also after you get home. Obviously you should always remember to make sure that both the kids and pets are not left in parked cars as the cars will become overheated way too quickly and can lead to death or severe illness. But also keep in mind the rocks themselves.

Are the rocks you are collecting toxic? Could the rocks be harmful if they are licked to show the color? Remember kids often mimic what they see adults do but they don't always know the difference between what rocks are safe to lick and what rocks are dangerous. It's better to warn the kids ahead of time not to lick the rocks without asking an adult first. Also, just like medications, such as Acetaminophen, some rocks that don't cause any problems for people could be highly toxic to animals. If you aren't sure about a rock's safety, be sure to keep it out of the reach of your animals as well as the kids. (They might be curious as to the rock's true color too. I always told my cat we were rock spitters, not rock lickers.) Play it safe, give everyone a water bottle to spray their rocks with.

As always, be vigilant as the fire danger is very high.

Bonnie Eichler  
Education Chairperson

## CRITTER MAKING DAY - 2016

We will meet at Connie Klein's House on Saturday, October 8 from 1 PM to 4PM, To make the critters, we provide rocks galore, paint, brushes, decopage, glue, glue guns, and fake eyes, large and small. We also have books on how to paint on rocks.

For our new members; for the Wheel of Fortune prizes for our show, we offer more than "just" rocks and trinkets. We dress our rocks with paint, decoupage, false eyes and tails to resemble critters - some recognizable, some whimsical. Come join us, have some fun and meet a fun crowd, and you will help us create prizes for the Wheel at our November Show. Kids and friends welcome. They do not have to be a member to take part. Sign up for Critter Day at the general meetings or come on over to Connie's .

Hazel Woolsey,

Wheel of Fortune Chairman

**CONTRA COSTA MINERAL & GEM SOCIETY** [www.ccmgs.org](http://www.ccmgs.org)

P0 Box 842, Concord, CA 94522

General Meeting: Second Monday of the month at 7:30 p.m. Centre Concord, 5298 Clayton Rd, Concord,  
(Clayton Fair Shopping Center, about 0.2 miles northwest on Clayton from Ygnacio Valley Road) Cross street  
Balhan Drive, next to Clayton Valley Bowl, free parking

Membership Fees: Initiation \$5; Regular Member \$10, Junior \$1  
VISITORS ARE WELCOME! BRING A FRIEND!

**Board and Committee Members 2016**

Please do not publish this list, Editor

President

**Dave Kleesattel**

daveklees@aol.com  
(925) 798-8240

1st Vice President, Programs

**Dennis Freiburger**

[Dennisfrei@aol.com](mailto:Dennisfrei@aol.com)  
(925) 680-8936

2<sup>nd</sup> Vice president, Field Trips**Kelly Plumb**

510 799 4633  
[Kellyplumb900@yahoo.com](mailto:Kellyplumb900@yahoo.com)

Secretary

**Mary Hicks**

925 779 0698  
[maryhicks@comcast.net](mailto:maryhicks@comcast.net)

Treasurer

**Mary Hanjes**

925 932 4345  
[mrhanjes@gmail.com](mailto:mrhanjes@gmail.com)

Federation Director

**Dick Pankey**

925 439 7509  
[Dickpankey@juno.com](mailto:Dickpankey@juno.com)

Ecology

**Open**

Publicity  
**Open**

Property  
**Therese Clark**  
925 674 7055

Hospitality  
**Open**

Display  
**Cheryl Morgan**

Librarian  
**Paul Black**  
925 212 3255  
[challengerdev@comcast.net](mailto:challengerdev@comcast.net)

Show  
**Harry Nichandros**  
925 674 7055  
[Nichandros\[at\]juno\[dot\]com](mailto:Nichandros[at]juno[dot]com)

Sergeant at Arms  
**Open**

Historian

**Debbie Blevins**

925-680-6562  
[OHB@Astound.net](mailto:OHB@Astound.net)

Education

**Bonnie Eichler**

(925) 944-1331  
[BonnieE1969@sbcglobal.net](mailto:BonnieE1969@sbcglobal.net)

Refreshments

**Vickie Hotopp**

925 566 8588

Membership

**Mary Jernigan**

(925) 852-1133  
[M10jernigan@yahoo.com](mailto:M10jernigan@yahoo.com)

Bulletin Editor

**Terry Caskey**

925 689 2119  
[tcaskey@comcast.net](mailto:tcaskey@comcast.net)

Past President

**Donna Albrecht**

Past Historian

**Hazel Woolsey**

925 837 3287

August 2016

S	M	T	W	T	F	S
	1	2	3	4	5	6
			Board Meeting			Bead In
7	8	9	10	11	12	13
	General Meeting					
14	15	16	17	18	19	20
	Articles Due					
21	22	23	24	25	26	27
28	29	30	31			

**First Class**  
 Member of American and California Federation of  
 Mineralogical Societies

Contra Costa Mineral and Gem Society  
 P.O. Box 842, Concord, Ca 94522-0842

**Diablo Diggins**  
 Newsletter of the Contra Costa Mineral  
 and Gem Society  
[www.ccmgs.org](http://www.ccmgs.org)  
 Editor- Terry Caskey  
 Send reports to [tcaskey@comcast.net](mailto:tcaskey@comcast.net)  
 The Contra Costa Mineral and Gem Society  
 was formed in 1950 to encourage the study  
 of mineralogy, lapidary arts and field  
 collection.  
 Members meet the second Monday of each  
 month (third Monday in June) at Centre  
 Concord, 5298 Clayton Rd, Concord, Ca  
 94521 (Clayton Faire Shopping Center  
 between Ygnacio Valley Rd and Ballham Dr,  
 next to Clayton Valley Bowl).  
 Visitors are welcome! Bring a friend!